

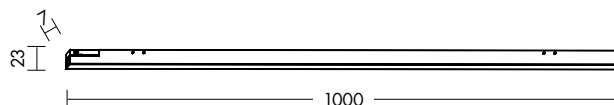
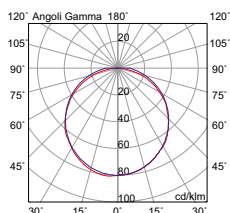
# YUGEN LINEARE



Installabile su binario di lunghezza minima 1100 mm

42V

Codice	CCT	Flusso lm	Potenza	Dimensioni mm
<b>YUG002N</b>	2700K	910	9W	1000x7x23



## Finiture



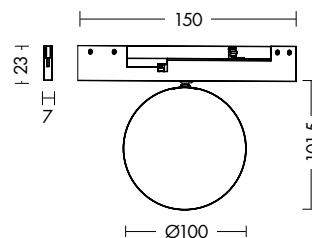
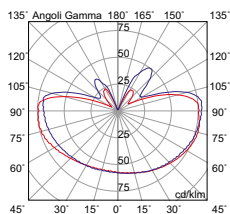
Nero

# YUGEN GLOBE



42V

Codice	CCT	Flusso lm	Potenza	Dimensioni mm
<b>YUG003N</b>	2700K	280	7W	Ø100x150x101,5



## Finiture



Nero