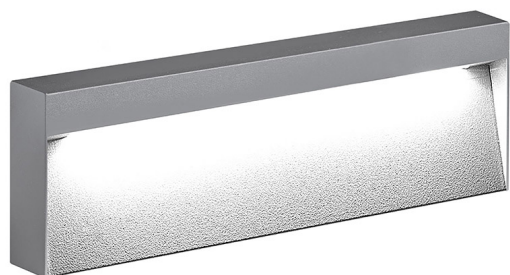


# KIKI

## KIK004GR

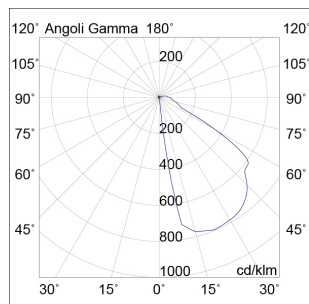
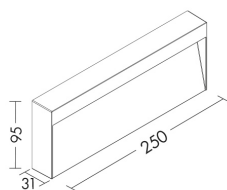
OUTDOOR Wall lamps



### Description

#### KIKI - WALL LAMP 9W LED 4000K - RECTANGULAR

Outdoor (IP65) wall LED luminaire, suitable for stonework walls where a recessed version is not installable. Die-cast aluminium body, painted with polyester powders, highly resistant to UV rays and corrosion. Downward light emission. Available in square and rectangular shape, with three finishes (white, grey and anthracite) and in two gradations (3000K and 4000K). IP68 linear connectors for moisture protection and anti-condensation linear joints are available.



### Product features

Etim group:	EG000027
Etim class:	EC002892
Installation:	Wall lamps
Material:	Aluminium
Colour:	Grey
Dimensions:	250 x 31 x 95 mm
Net weight:	0.8 kg
Lamp holder:	OTHER
Source:	LED
Power:	8W
Gradations:	4000K
Light emission:	Direct
Nominal direct light beam:	590 lm
Beam angle:	50°
CRI:	>80
Power supply :	220-240V
Protection degree:	IP65
Insulation class:	I

In order to ensure a constant updating of its products, ROSSINI ILLUMINAZIONE reserves the right to make changes to improve without notice.

# KIKI

KIK004GR

